

## Door and pull preparation template

Q50048 - 0120

### Important Note

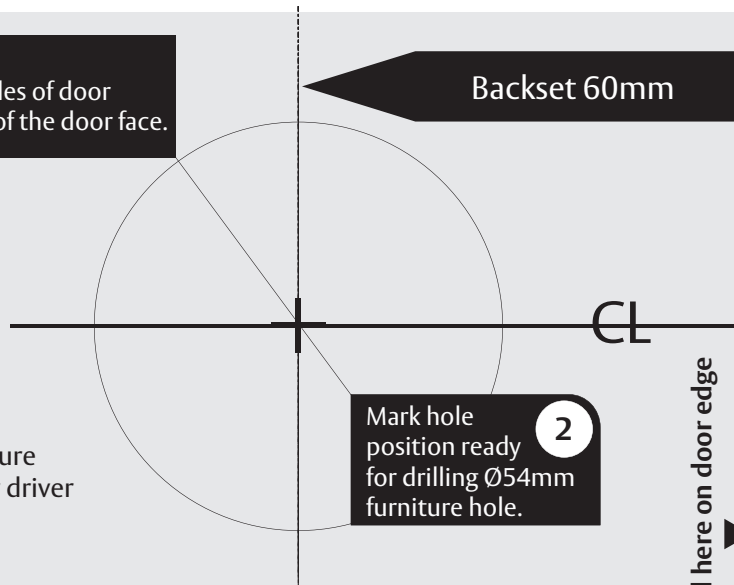
Drill hole from both sides of door to prevent splintering of the door face.

### Tools Required

- Ø54mm Hole saw
- Ø25mm Spade bit
- Ø2mm Drill bit
- Power drill
- 25mm Chisel
- Pencil
- Ruler or tape measure
- Phillips head screw driver



Please ensure that all necessary safety precautions are taken when installing this product.



Mark hole position ready for drilling Ø54mm furniture hole. **2**

Tear along perforated edge

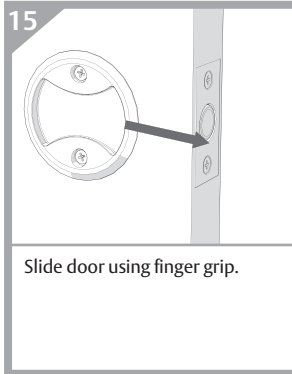
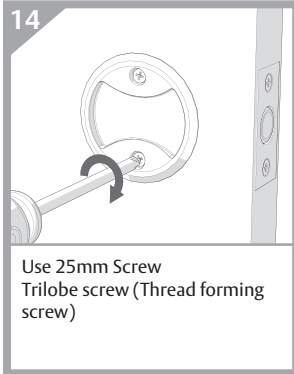
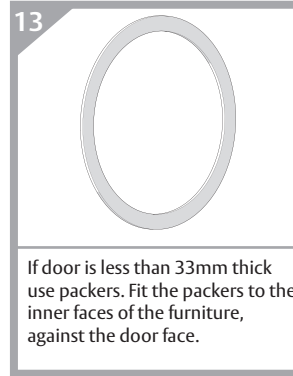
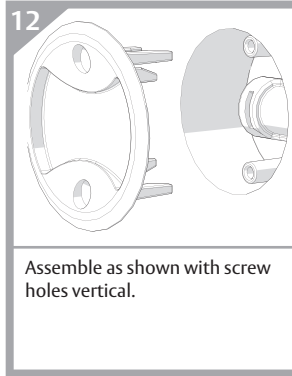
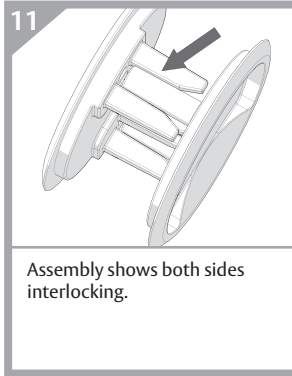
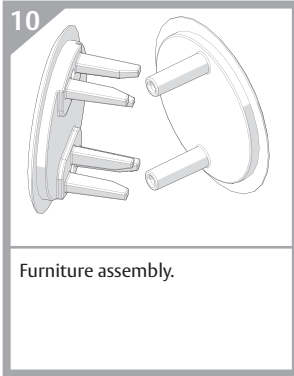
Find centre of door edge and mark ready for drilling Ø25mm latch hole. **1**

## Passage Set door preparation and pull installation (steps 1 - 9)

<p><b>1</b></p> <p>900mm</p> <p>Mark line on the door face approximately 900mm from the floor. Tear along perforated line on template. Fold page along --- dashed line and place fold on door edge. Align CL with marked line on door face.</p>	<p><b>2</b></p> <p>1. Find centre of door edge and mark ready for drilling Ø25mm pull hole. 2. Mark hole position ready for drilling Ø54mm furniture hole.</p>	<p><b>3</b></p> <p>Drill Ø2mm pilot hole squarely through the door.</p>	<p><b>4</b></p> <p>1. Drill Ø25mm pull hole to depth of 70mm, ensure hole is drilled squarely. 2. Drill a Ø54 furniture hole, from both sides of door to prevent splintering.</p>	<p><b>5</b></p> <p>Insert pull into Ø25mm hole, mark around latch face plate.</p>
<p><b>6</b></p> <p>Chisel out recess to suit face plate. Face plate must be flush with door face.</p>	<p><b>7</b></p> <p>Insert pull into recess. Mark and drill 2mm pilot holes, and affix with screws provided.</p>	<p><b>8</b></p> <p>Press the retractable door pull button to release it. (Press it to reset).</p>	<p><b>9</b></p> <p>Pull on the retractable door pull to remove door from cavity.</p>	

Fold here on door edge

## Passage set installation (steps 10 - 15)



## Passage set strike installation (steps 16 - 21)

